



Producer Responsibility Schemes for Waste Management in Hong Kong

**Jude Chow
Chairman**

Hong Kong Waste Management Association

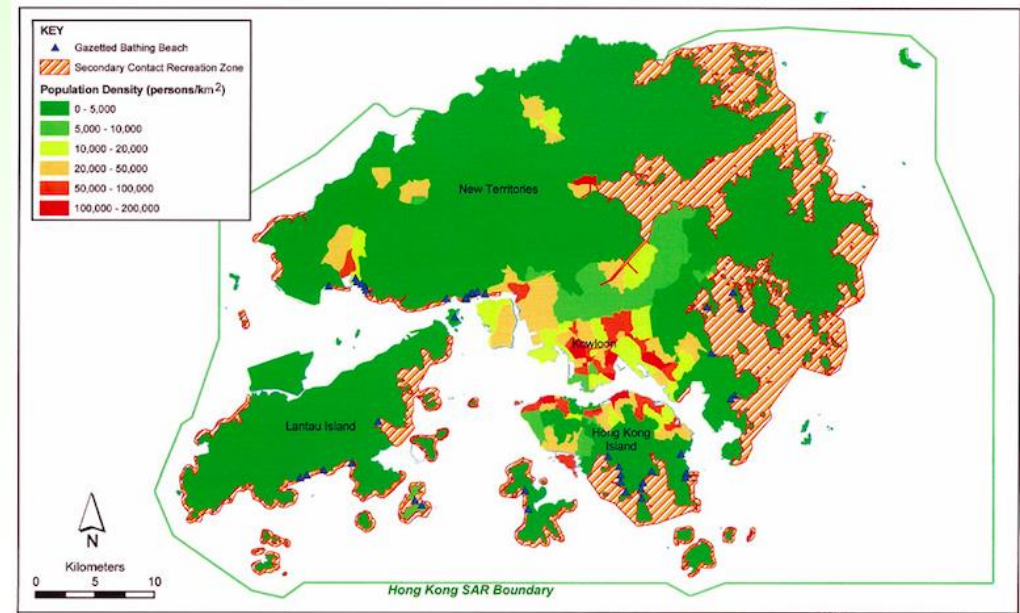
A large, semi-transparent watermark of the HKWMA logo is positioned on the left side of the slide. It features a light blue circular border, a white recycling symbol in the center, and a white rectangular box at the bottom containing the text 'HKWMA' in grey capital letters.

HKWMA

Hong Kong's Demographic



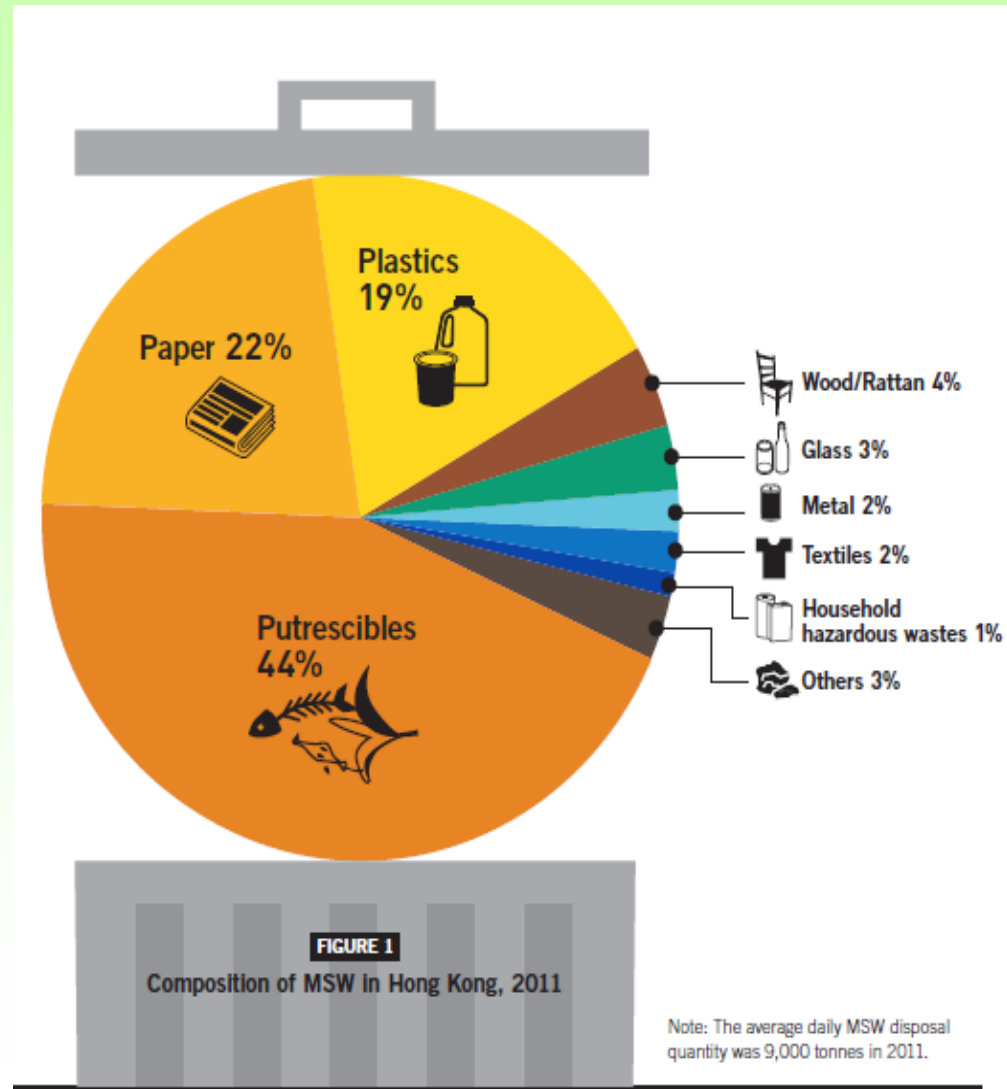
- Hong Kong Population: **7.347M**
- Hong Kong's Land Area: **2,754Km²**
- Population Density: **6,690 /Km²**, Kwun Tong **57,250 /Km²**
- Average annual per capita expenditure **US14,235**
- Restaurant Receipts : **HKD109.5B (Jun 2016 to Jun 2017)**



Waste Realities



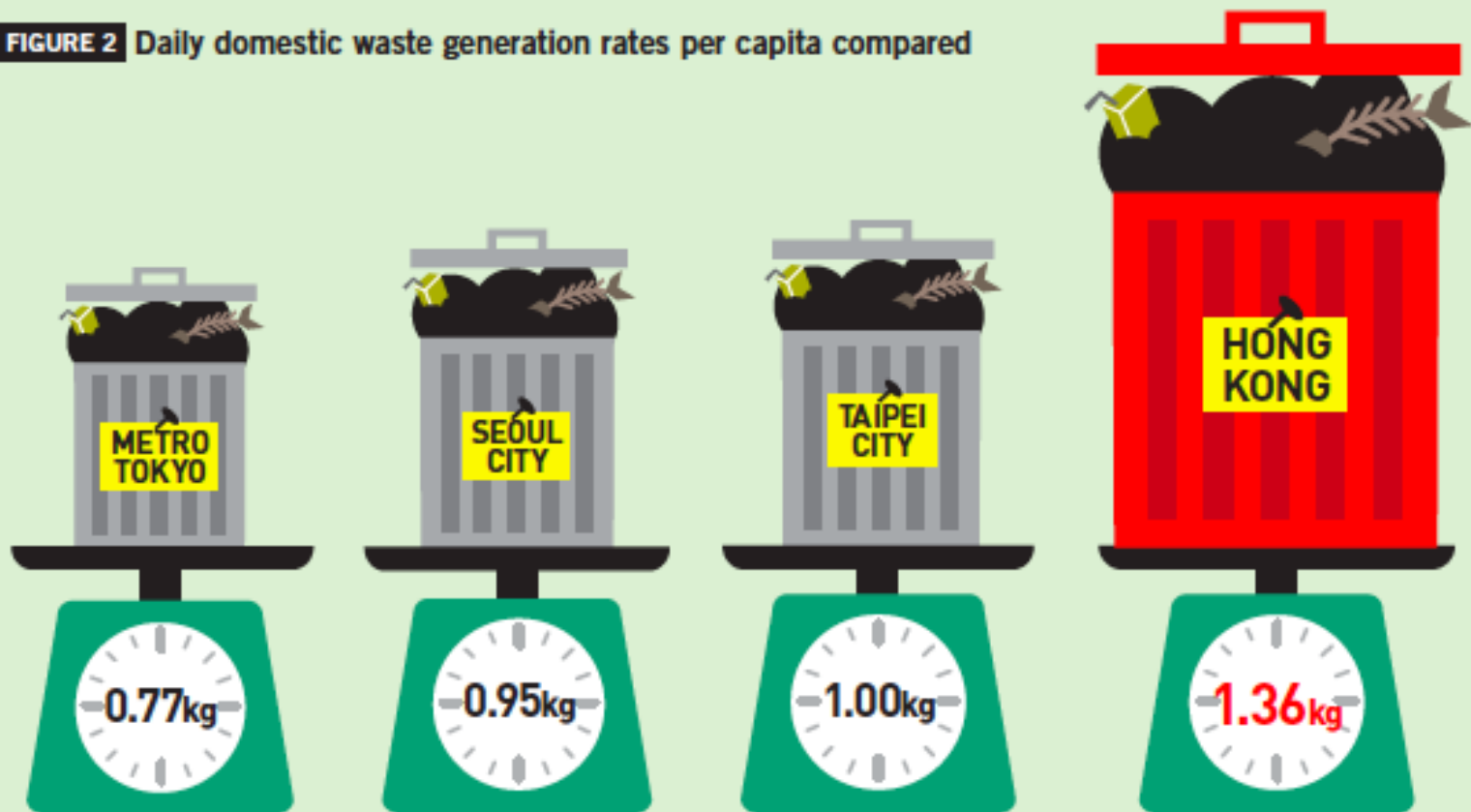
Waste	Tonnes/day
Municipal Solid Waste	9,000
Domestic Waste [Food Waste]	6,000 [2,550]
Commercial & Industrial Waste [Food Waste]	3,000 [1,050]
Construction waste	3,350
Sewage sludge	950
Other waste	200
Total :	13,500



Where HK sits amongst other cities



FIGURE 2 Daily domestic waste generation rates per capita compared



Our recovery rate for MSW is reasonable.

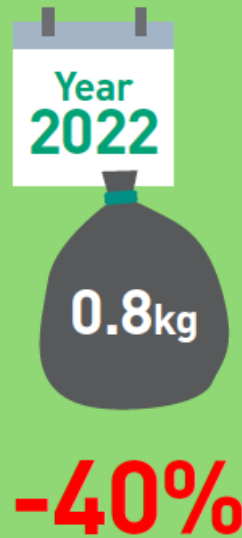
Our generation and disposal rates are NOT.

Waste Reduction Target



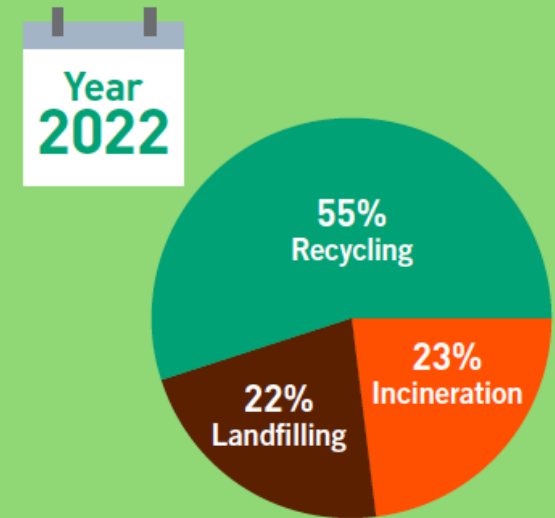
Specific Targets

To reduce the current per capita MSW disposal rate of 1.27 kg per day to 0.8kg per day by 2022.



Target Result

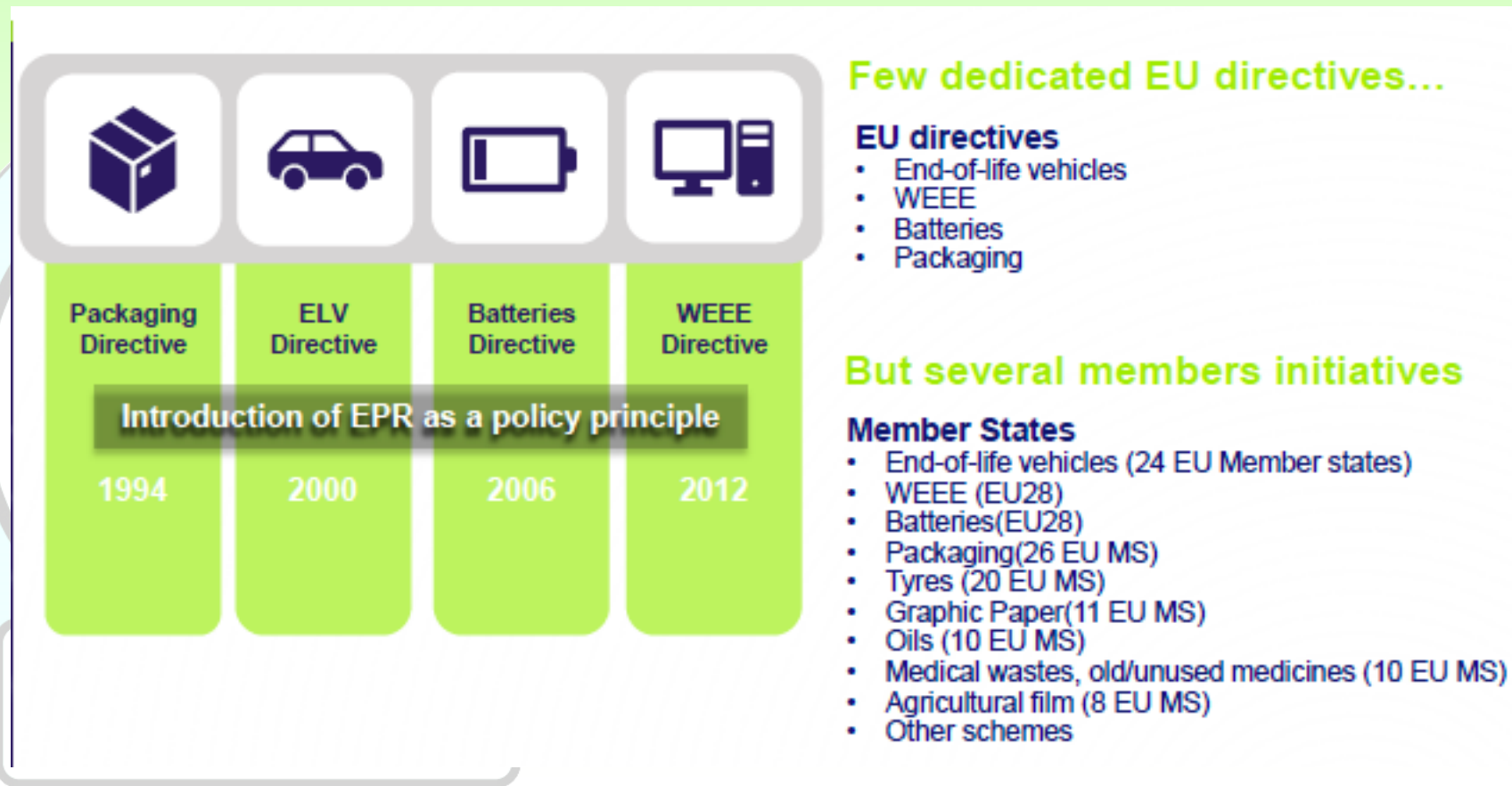
To transform the waste management structure by 2022.



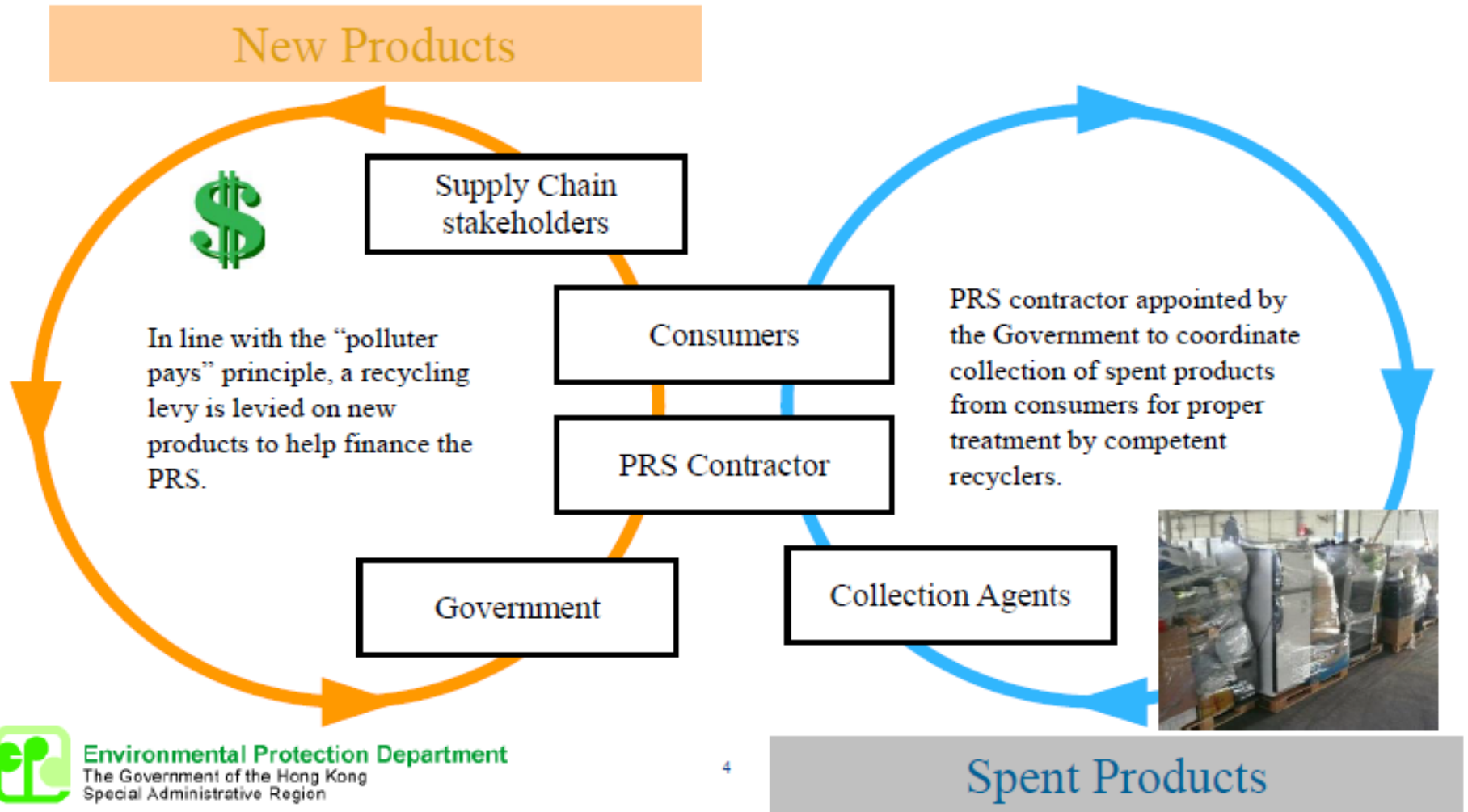
Producer Responsibility Schemes



The promotion of producer responsibility is an international trend where jurisdictions across the globe shape the behavior of consumers and stakeholders along the supply chain by internalizing the environmental costs into the life-cycle of consumer products.



Overall Framework of the PRS



Producer Responsibility Schemes (PRS)



- Producer responsibility scheme (PRS) is a key policy tool in the waste management strategy in Hong Kong.
- Enshrining the principle of “polluter pays” and the element of “eco-responsibility”, the PRS concept requires :
- Mandatory Producer Responsibility Scheme
 - The Environmental Levy Scheme on Plastic Shopping Bags
 - PRS on Waste Electrical and Electronic Equipment
 - PRS on Glass Beverage Containers



Environmental Levy on Plastic Shopping Bags



Policy Objective

Phase 1 – 2009

Full Implementation 2015

✓ To reduce the indiscriminate use of plastic shopping bags

• Level of the Levy

✓ 50 cents

Impact

✓ 50% reduction of plastic shopping bags from “relevant retailers”

✓ Save close to 1 billion plastic shopping bags each year



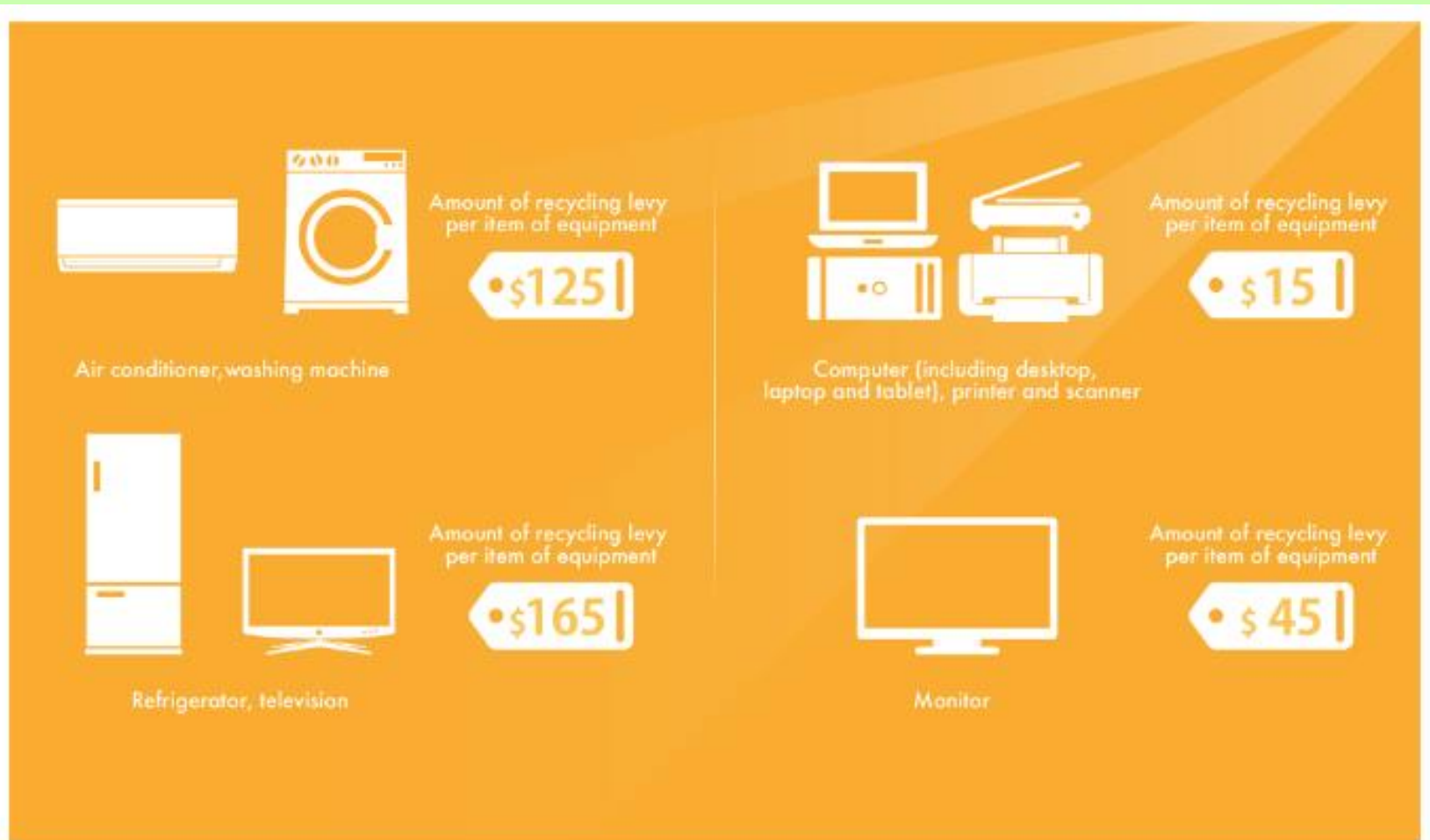
WEEE -an environmental problem



- Hong Kong generates some 70 000 tonnes of WEEE annually, most of which are exported for reuse or recovery of valuable materials; yet the reliance on export may not be sustainable in the long run
- WEEE from other places may be traded through Hong Kong as second-hand goods or waste
- Starting from 1 August 2018, suppliers must have been registered the EPD before distributing REE.
- Besides, the disposal licensing control, import and export permit control and landfill disposal ban in respect of abandoned REE will commence on 31 December 2018



Product coverage: 8 types of household equipment



- Collectively as **Regulated Electrical Equipment**(or “**REE**”)

HKWMA

Producer Responsibility Scheme (PRS) on WEEE



- **Upstream Measures**

- Suppliers(i.e. manufacturers and importers) of REE must be registered and pay a recycling levy on REE that they distribute in the Hong Kong market
- Sellers of REE must arrange remove service free of charge if so requested by consumers so that the old item is collected for delivery to competent recyclers for proper recycling

- **Downstream Measures**

- Licensing control over the storage, treatment, reprocessing or recycling of abandoned REE
- Import and export permit control for abandoned REE
- Landfill ban

HKWMA

PRS on Glass Beverage Containers



- Annual generation of 100 000 tonnes of waste glass containers, mostly landfilled
- Glass is recyclable but collection cost is high, hence cannot rely on market force alone to promote recycling
- Borrowing some elements from the WPRS (PRS on WEEE), we will soon implement a PRS on **glass beverage containers**



PRS on Glass Beverage Containers



- **Upstream Measures**

- Beverage held in glass containers as “regulated article”
- Registration of suppliers and payment of recycling levy for “regulated article” distributed in Hong Kong
- Levy exemption provided for suppliers’ re-bottling arrangement

- **Downstream Measures**

- Licensing control over storage, treatment, reprocessing and recycling of waste glass containers
- Import and export permit control over waste glass containers





Thank you!

